

Model i60 Integral Preamp Sensor

Electrical Specifications:

Supply Voltage (Vs): 15 to 30 VDC 20 kHz High pass filtering
Gain: 40db nominal Output Impedance: 50 Ohm
Temp Range: - 10 to 85°C Noise < 10mV

Mechanical Specifications:

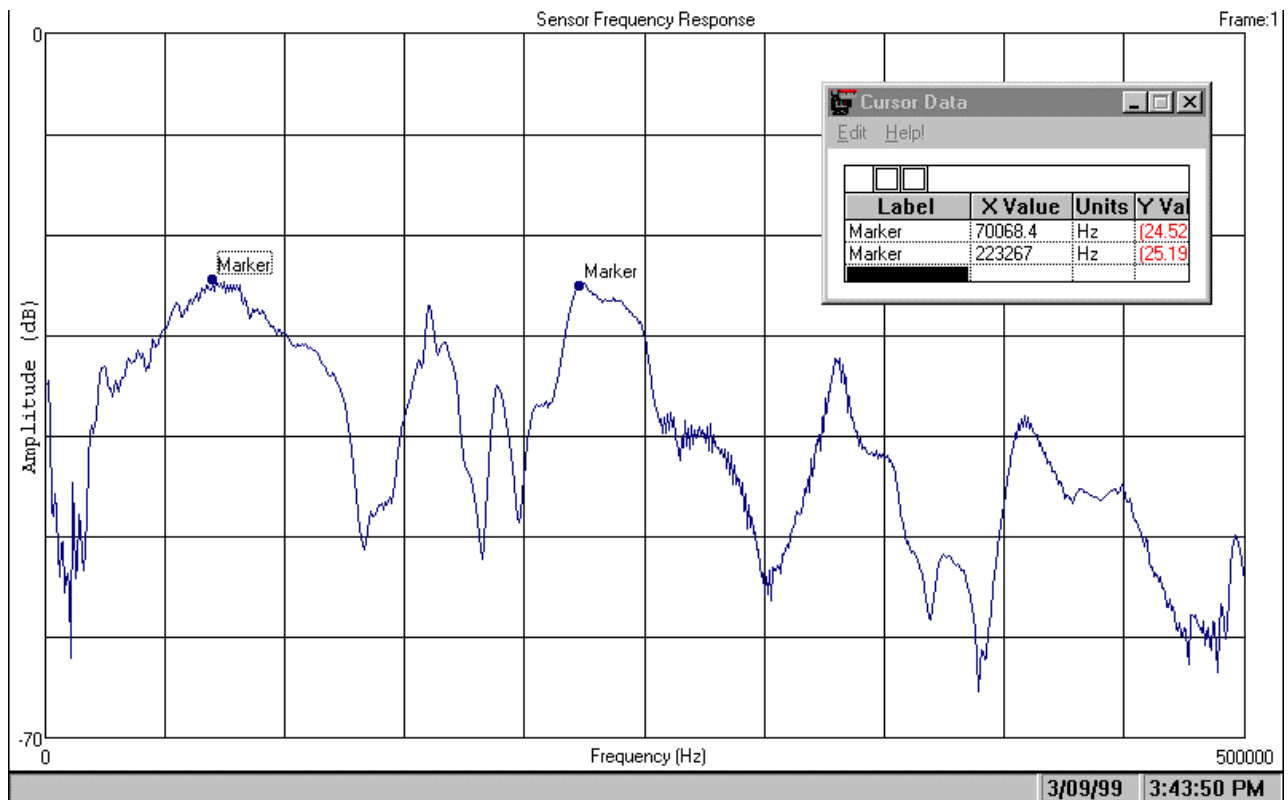
Dimensions: 1 1/8" dia x 2" h (29 mm x 52 mm) Weight: 5.1 oz (144 gms)

All Stainless steel construction, electrically isolating epoxy face

Connector: Side-mount Female BNC



Typical Face to Face Sensor Spectral Response:



Source Crystal: Panametrics V101

Source Voltage: Swept 11 – 495 kHz Sweep Rep Rate = 10 mSec Input Signal $V_{RMS} = 0.070$