

Model i150 Integral Preamp Sensor

Electrical Specifications:

Supply Voltage (Vs): 15 to 30 VDC 100 kHz High pass filtering
Gain: 40db nominal Output Impedance: 50 Ohm
Temp Range: - 10 to 85°C Noise < 10mV

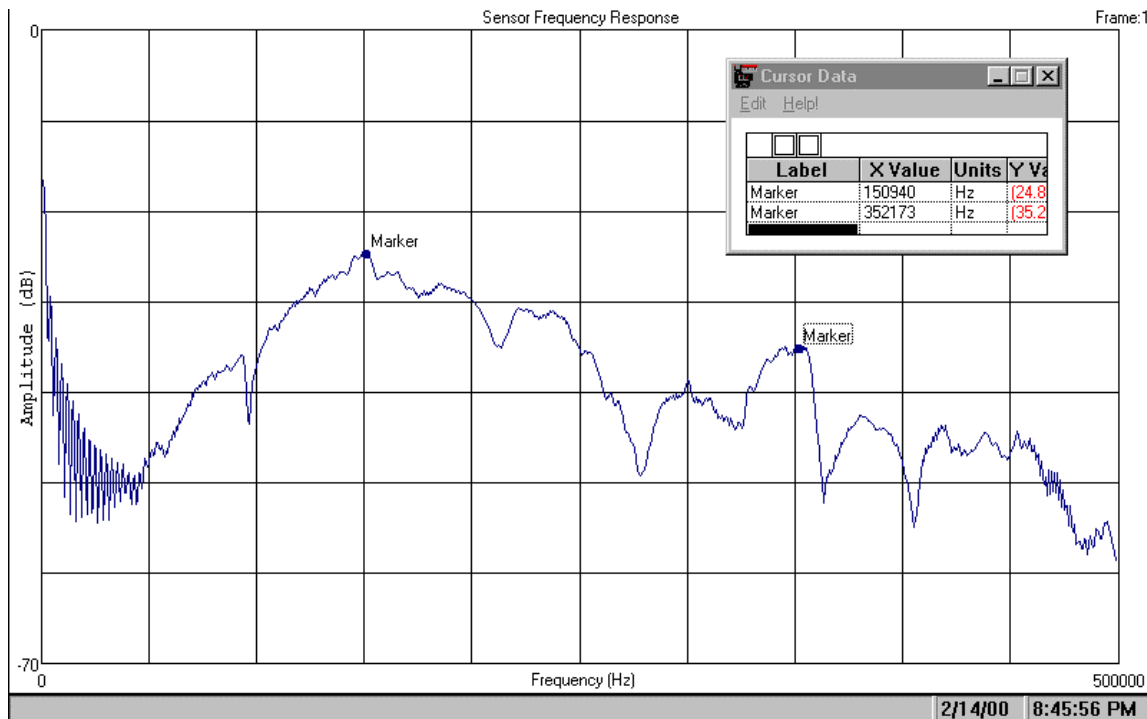
Mechanical Specifications:

Dimensions: 1 1/8" dia x 1 5/16" h Weight: 3.2 oz
(29mm x 34 mm) (91 gms)

All Stainless steel construction with electrically isolating epoxy face
Connector: Side-mount Female BNC



Typical Face to Face Sensor Spectral Response:



Source Crystal: Panametrics V101

Source Voltage: Swept 11 - 495 kHz Sweep Rep Rate = 10 mSec Input Signal $V_{RMS} = 0.070$

Acoustic Emission Consulting, Inc.
Ver 2/8/01