

Model ds375 Differential Sensor

Electrical Specifications:

Differential Output

Temp Range: - 10 to 100+ °C

Mechanical Specifications:

Dimensions: 7/8" dia x 1 1/8" h Weight: 1.3 oz (37 gms)

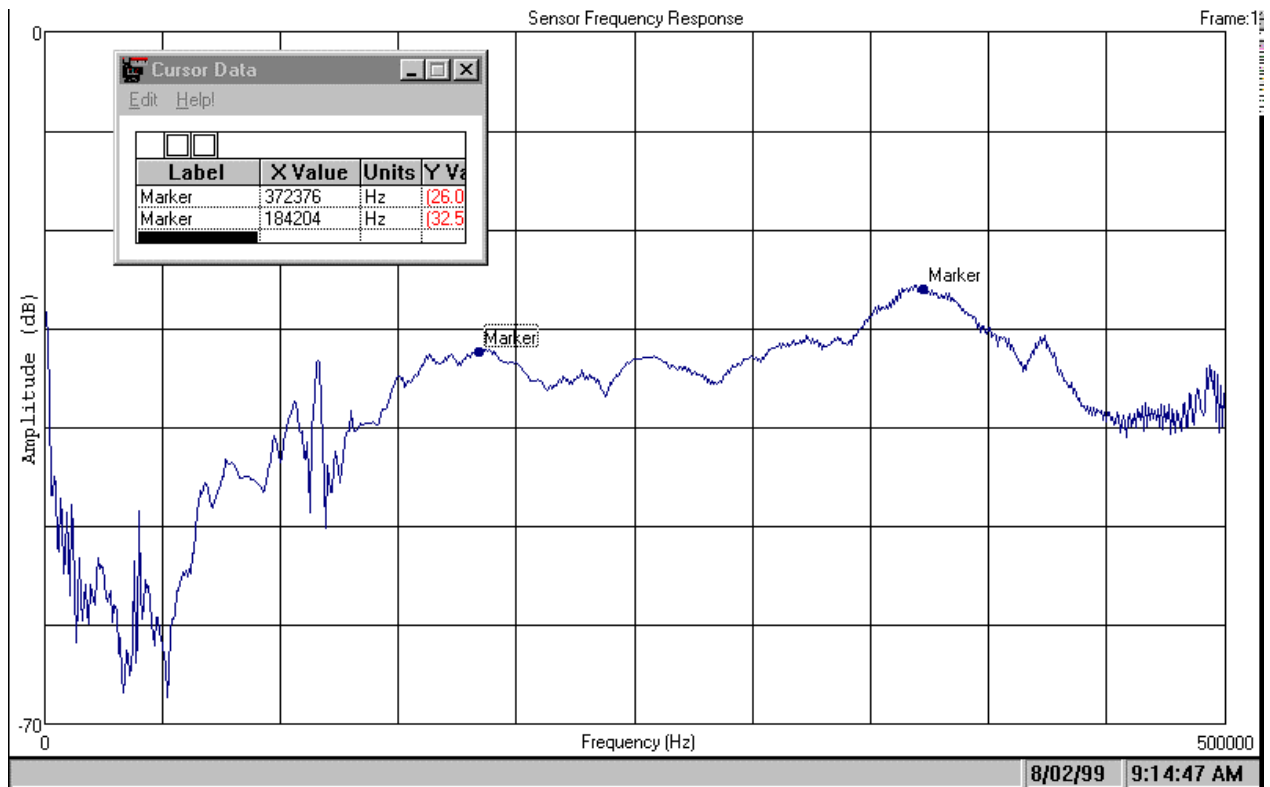
(22 mm x 27 mm)

All Stainless steel construction with electrically isolating ceramic face

Connector: Side-mount 2-pin LEMO



Typical Face to Face Sensor Spectral Response:



Source Crystal: Panametrics V101

Source Voltage: Swept 11 - 495 kHz

Sweep Rep Rate = 10 mSec

Input Signal $V_{RMS} = 0.141$